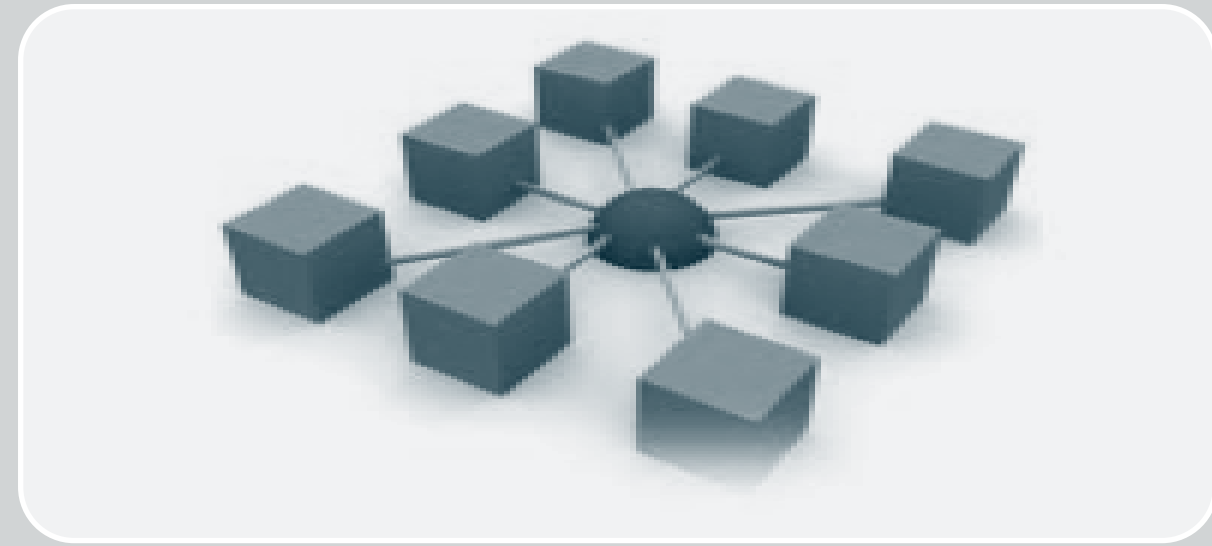


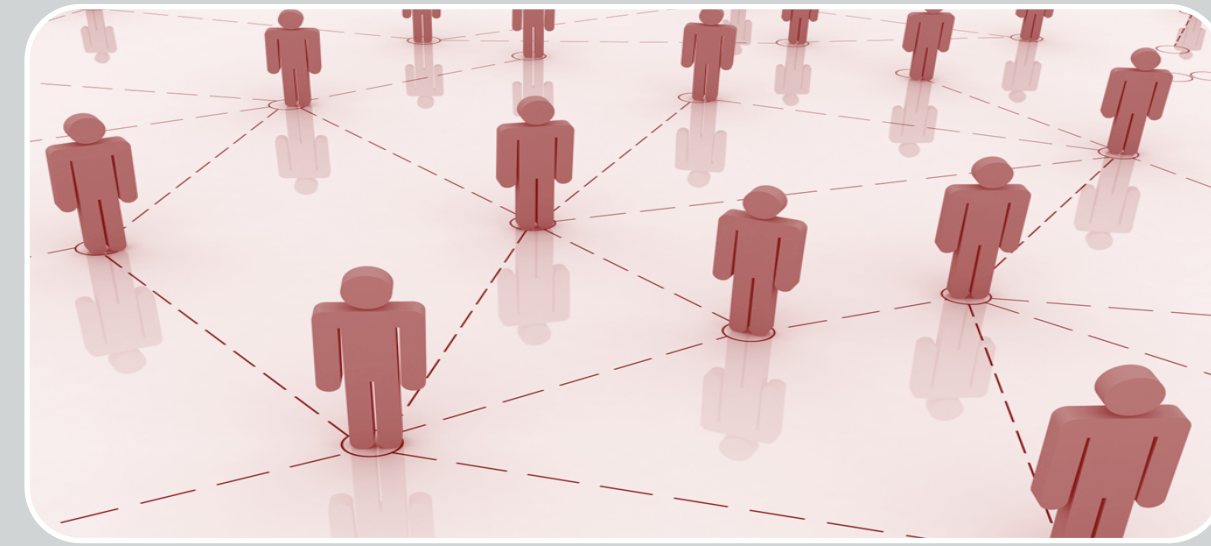
A Social Networking Research Environment for Scientific Data Sharing: The D4Science Offering



Based on the D4Science Hybrid Data Infrastructure i.e. a federation of existing infrastructures & information systems



Adopts Virtual Research Environments as effective approach to serve Communities of Practice

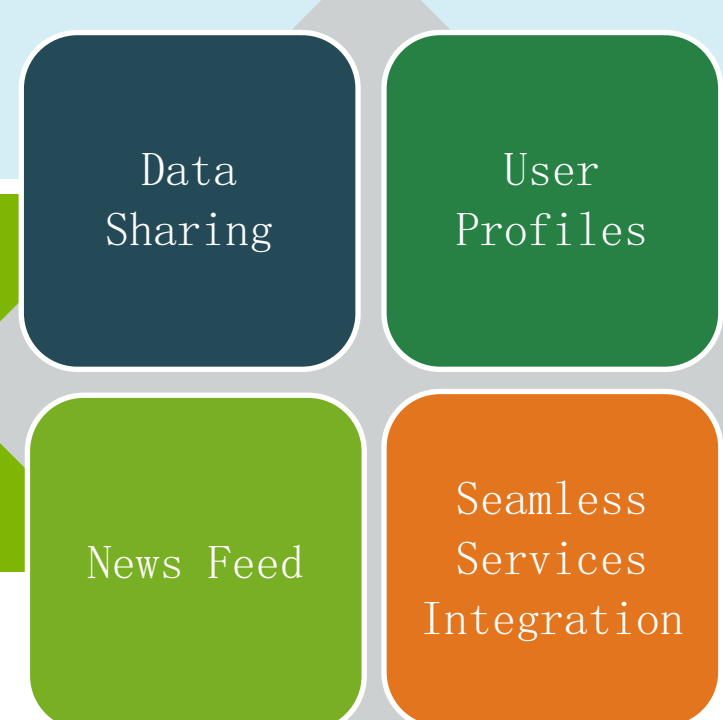


Exploits Social Networking to reach integration among individuals and institutions

D4Science Infrastructure:
www.d4science.org
info@d4science.org
gCube: the enabling technology:
www.gcube-system.org

Contact for Information:
 Massimiliano Assante
massimiliano.assante@isti.cnr.it
 CNR-ISTI
 Via Moruzzi, 1 56124, Pisa - Italy
 Tel: +39 050 315 2908
 Fax: +39 050 3153464

The D4Science Research Environment

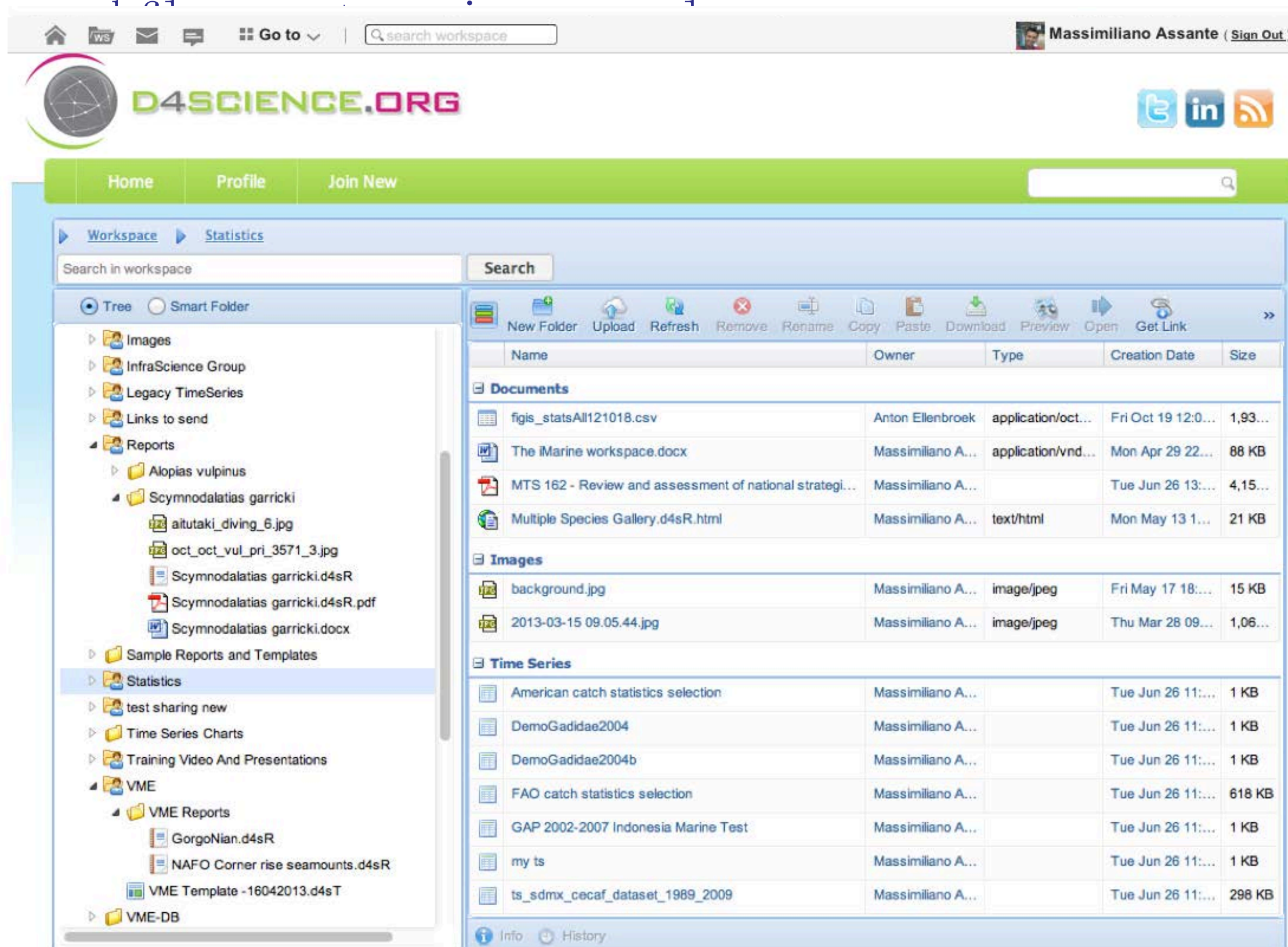


Key Features

- i. A set of applications made available through a web browser and relying on the D4Science Hybrid Data Infrastructure (HDI):
 - An HDI is an IT infrastructure providing its users with a comprehensive set of data management & computing facilities offered as-a-Service
- ii. conceptually close to the common facilities promoted by social networks
- iii. adapted to promote large scale collaboration and cooperation on comprehensive scientific products, data sets, theories and tools

Workspace: A folder-based file system allowing to manage and share complex information objects, ranging from files to algorithm, processes,

Home Social: A continuously updated list of events / news / products shared by users and applications



Notifications: A list of happenings organized by date, e.g. publication of a product, comments on a product, change in the status of a running

User Settings: An area where users can configure diverse aspects characterizing the system behavior including his/her data and notification preferences

